

THE  
NEO-TRADITIONAL  
COLLECTION

featuring spacious front porches  
and rear garages accessed by  
alleyways

THE  
SHUFFLETON

STYLE 1-story

BEDROOMS 3

BATHROOMS 2

SIZE 1,452 sq. ft.

TOP ENERGY-SAVING FEATURES:

- 2x6 Advanced Framing Construction
- Blown Cellulose Insulation
- R-21 Wall Insulation
- 95%+ High Efficiency Gas Furnace
- High Efficiency Gas Water Heater
- Energystar V3 Certification



Elevation K



Elevation J



Potterhill  
Homes  
*Our character shows in every home*

5400 DuPont Circle, Suite J  
Milford, OH 45150  
(513) 248-4428  
www.PotterhillHomes.com

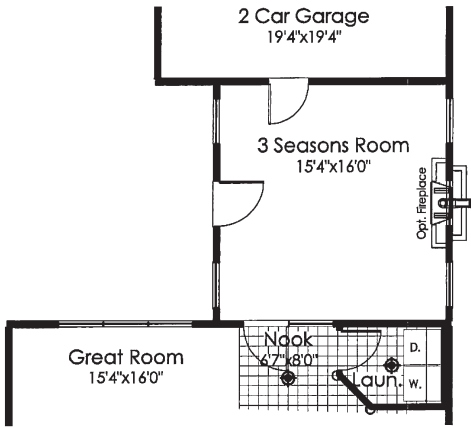
The Shuffleton gets its name from a Norman Rockwell painting and the home is every bit as quaint as the paintings. The Shuffleton boasts 3 bedrooms including a master retreat, 2 bathrooms, and a layout that begs for entertaining.

The great room acts as a connector for the eat-in kitchen and formal dining room. The distinct architecture, 9' ceilings and arched openings give the Shuffleton a unique style unlike anything else you'll find in this price range.

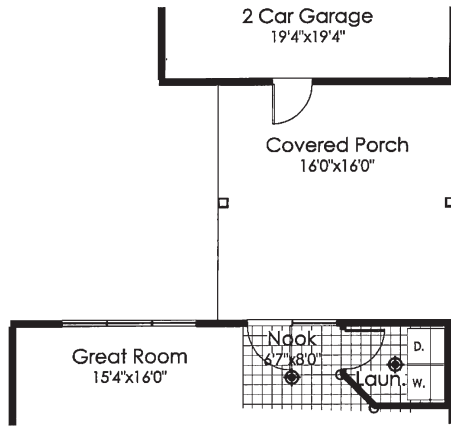
We guarantee the  
lowest energy bills  
compared to other  
local builders

Elevations and floor plans are for illustrative purposes only. Gas HVAC and Water Heater are standard where gas is available. Contact your housing consultant for exact floor plans, options, and elevations.

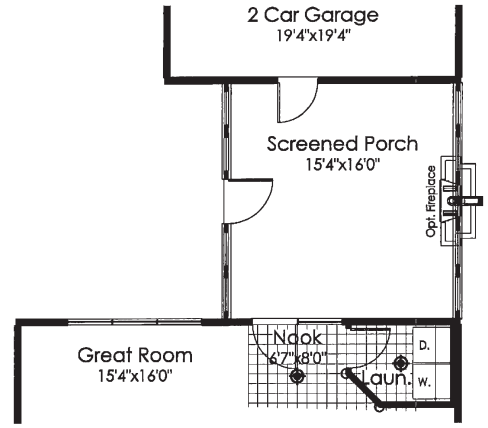




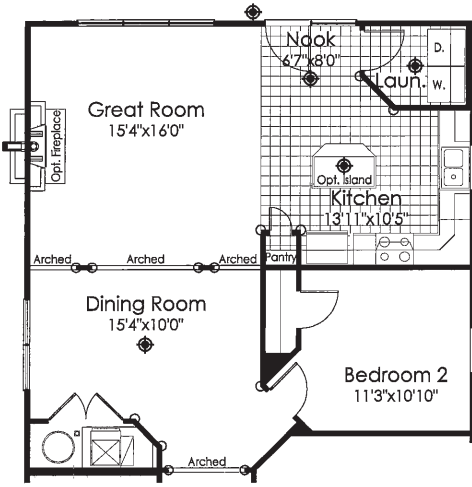
3 Seasons Room Option



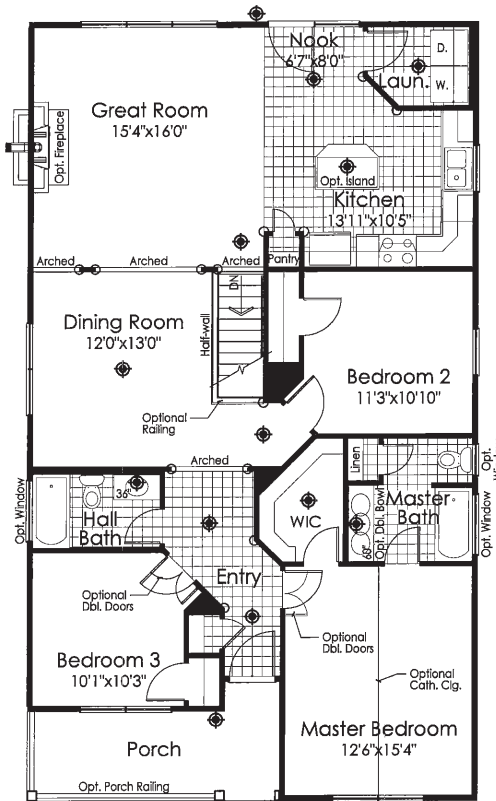
Covered Porch Option



Screened Porch Option



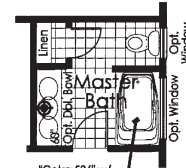
Partial First Floor Plan w/ Slab



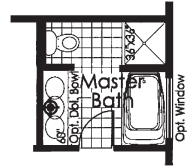
○ = Rounded Drywall Corners

First Floor Plan w/ Basement  
(9' Ceilings Standard)

⊙ = LIGHT FIXTURE LOCATION



Master Bath Soaking Tub Option



Master Bath w/ Garden Tub/Shower Option