

THE
NEO-TRADITIONAL
COLLECTION

*featuring spacious front porches
and rear garages accessed by
alleyways*

THE
WRIGHT

STYLE 1-story

BEDROOMS 3

BATHROOMS 2

SIZE 1,650 sq. ft.

TOP ENERGY-SAVING FEATURES:

- 2x6 Advanced Framing Construction
- Blown Cellulose Insulation
- R-21 Wall Insulation
- 95%+ High Efficiency Gas Furnace
- High Efficiency Gas Water Heater
- Energystar V3 Certification



Elevation K



Elevation J



**Potterhill
Homes**
Our character shows in every home

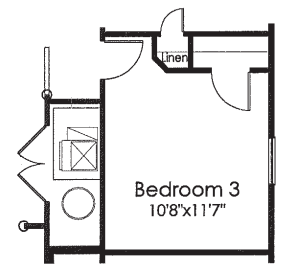
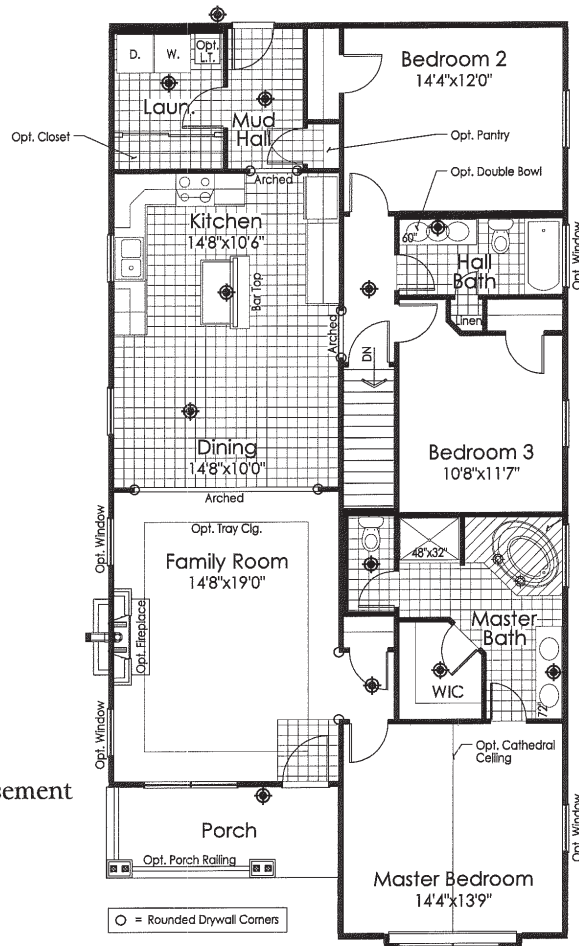
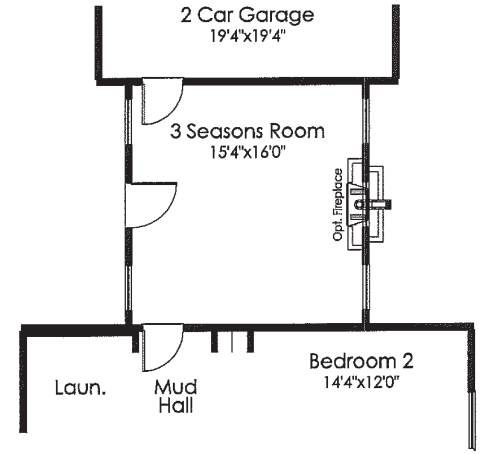
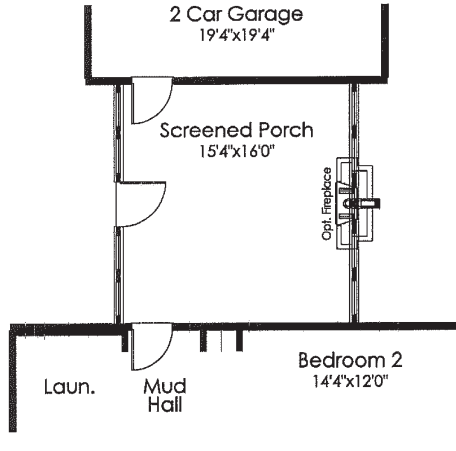
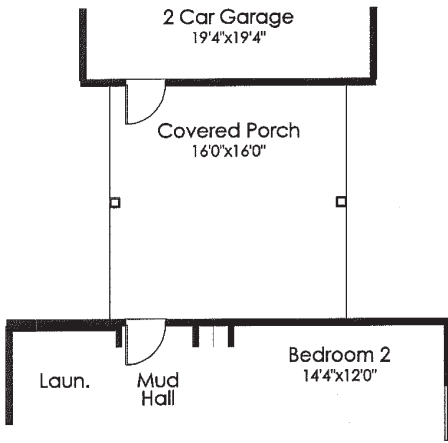
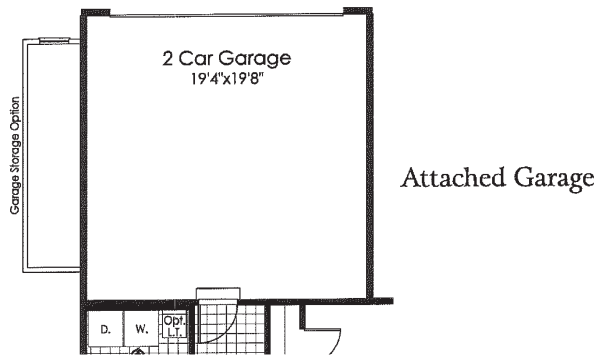
5400 DuPont Circle, Suite J
Milford, OH 45150
(513) 248-4428
www.PotterhillHomes.com

America's most famous architect, Frank Lloyd Wright, inspired this house, and like his homes, the Wright reflects distinctive architectural details and technological innovations. With an open floor plan featuring 9' ceilings and huge living room, the Wright sets itself apart from other homes. The oversized island kitchen and luxurious master retreat are the reasons that this is one of Potterhill Homes' most popular homes.

*We guarantee the
lowest energy bills
compared to other
local builders*

*Elevations and floor plans are for illustrative purposes only. Gas HVAC and Water Heater are standard where gas is available.
Contact your housing consultant for exact floor plans, options, and elevations.*





First Floor Plan w/ Basement
(9' Ceilings Standard)

◆ = LIGHT FIXTURE LOCATION

○ = Rounded Drywall Corners