

THE
TRADITIONAL
COLLECTION

featuring integrated garages
and modern floor plans

THE
MAY HOUSE

STYLE 1-story

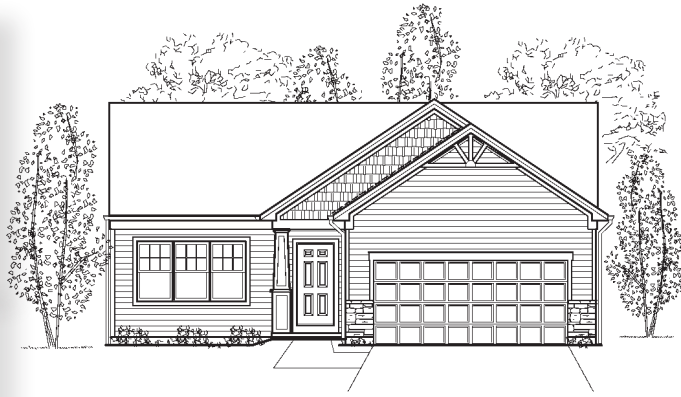
BEDROOMS 3

BATHROOMS 2

SIZE 1,267 - 1,323 sq. ft.

TOP ENERGY-SAVING FEATURES:

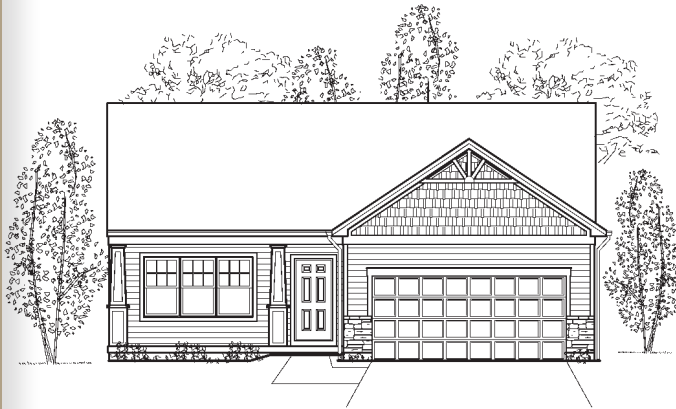
- 2x6 Advanced Framing Construction
- Blown Cellulose Insulation
- R-21 Wall Insulation
- 95%+ High Efficiency Gas Furnace
- High Efficiency Gas Water Heater
- EnergyStar V3 Certification



The MAY 'J'



Optional Dormer
Elevation 'J'



The MAY 'K'



Optional Dormer
Elevation 'K'



The MAY 'L'



Optional Box Bay
Elevation 'J' and 'K' only



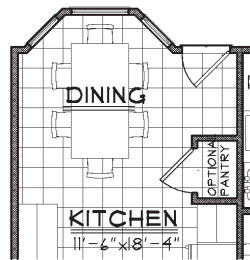
5400 DuPont Circle, Suite J
Milford, OH 45150
(513) 248-4428
www.PotterhillHomes.com

This ranch-style plan offers flexible living options and numerous exterior architectural options.

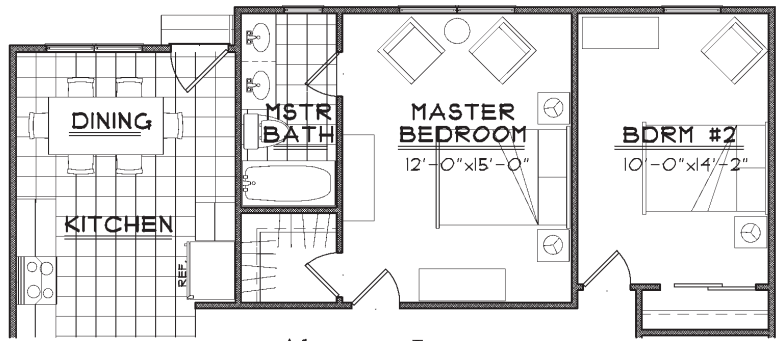
We guarantee the
lowest energy bills
compared to other
local builders

Elevations and floor plans are for illustrative purposes only. Gas HVAC and Water Heater are standard where gas is available. Contact your housing consultant for exact floor plans, options, and elevations.





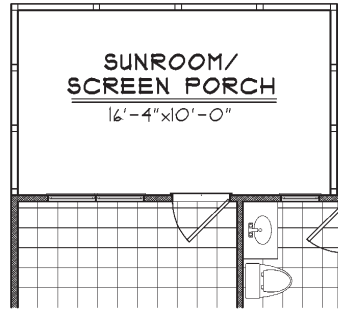
Alt. Kitchen/Dining
Optional Bay Windows
w/ Optional Pantry



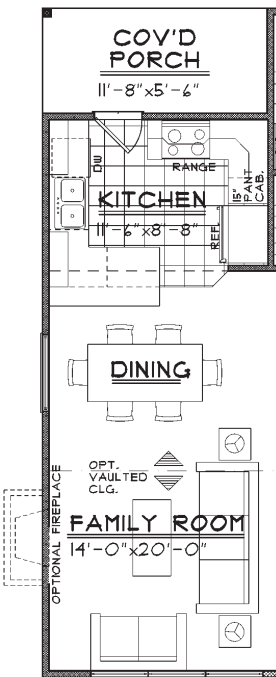
Alternate Layout
2'-0" Rear Extension

Options

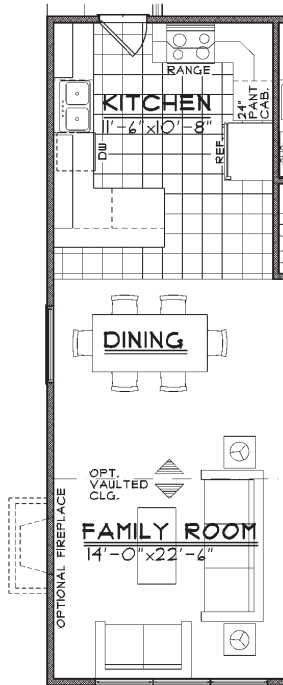
- Full Front Porch (Elevation 'K')
- Front Porch Rail
- Family Room Box Bay Windows (Elevation 'J')
- 3'-0" Family Room Extension (Elevation 'L')
- Family Room Dormer (Elev. 'J' and 'K' only)
- Family Room Vaulted Ceiling
- Kitch/Dining Bay Window w/ opt. Pantry
- 2'-0" Rear Extension
- Additional Kitchen Cabinets
- Screen Porch/Sunroom
- Alternate Kitchen/Dining
- Alternate Kitchen/Dining w/ Covered Porch
- Kitchen Under Cabinet Windows
- Gas Fireplace
- 2'-0" Garage Extension
- Master Bedroom Bay Windows
- Mud Room Cubbies and Bench



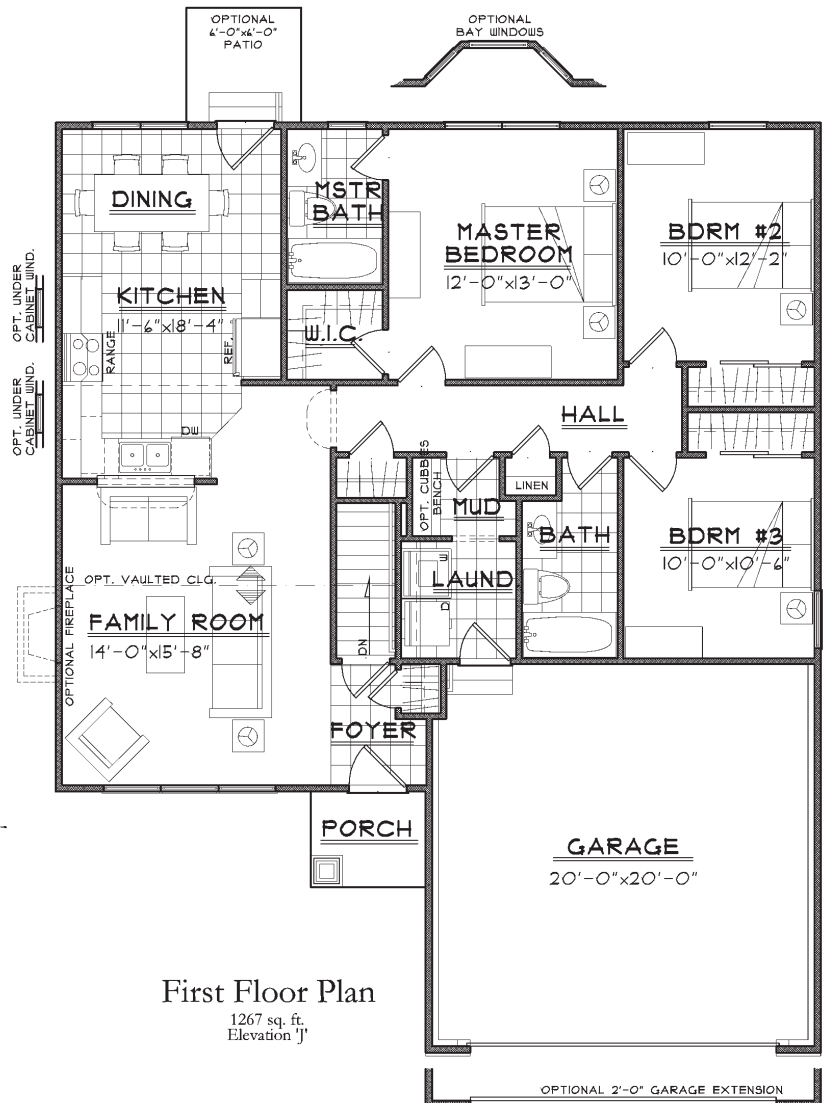
Screen Porch Plan



Optional Covered Porch



Alt. Kitchen/Dining



First Floor Plan

1267 sq. ft.
Elevation 'J'



The May Rev. 07/26/12

These floor plans and elevations are copyrighted. We have enforced and will continue to enforce our federal copyrights to protect the investment of our homebuyers.